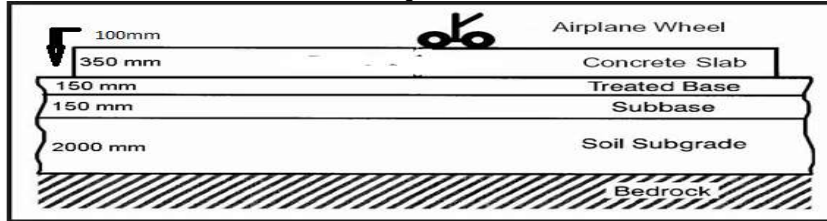


1

**Details of rigid pavement**

Width of Pavement- 3.5 meter  
 length of Pavement- 10meter  
 Reinforcement detail: -  
 Longitudinal bars- 8φ 125 c/c  
 Transverse bars- 8φ 150 c/c  
 Top & Bottom cover- 50mm & 35 mm respectively.  
 Side Cover- 50mm  
 Subbase – WBM using grade 35-65mm aggregate  
 Treated base- WBM using grade 25-50mm aggregate  
 Concrete Grade- M25

Figure 1



2

**Details of Flexible pavement**

Width of Pavement- 3.5 meter  
 length of Pavement- 10 meter  
 Subbase – WBM using grade 35-65mm aggregate and grade 25-50mm aggregate in two equal layers.

Bitumen Emulsion- 0.80 kg/sq.m  
 Cutback Bitumen MC30 grade- 0.60 kg/sq.m  
 Bitumen Grade - 60/70

Figure 2

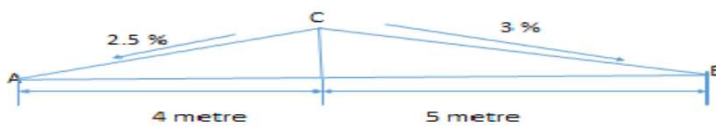


3

**Details of Figure 3**

Width of pavement on left side of crown = 4 metre  
 Width of pavement on right side of crown = 5 metre  
 Left side camber = 2.5 percent  
 Right SideCamber = 3 percent  
 Reduced level(RL) of point C = 100.00 Metre

Figure-3



4

Figure 4

