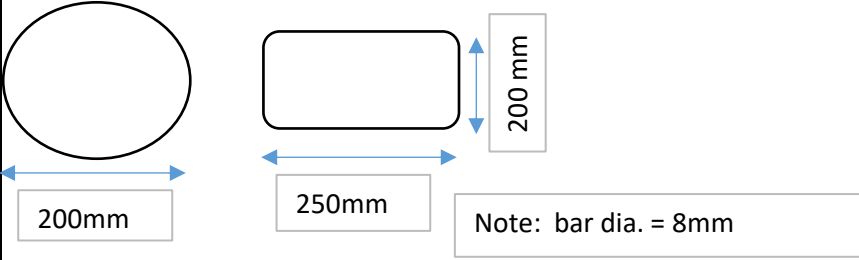


Practical Question Paper

Job role: Assistant Bar Bender & Steel Fixer(CON/Q0202)

Level: 2

Total Marks: 560		Time: 5 hours	
Candidate's Name:			
Roll No:			
CON/NO214: Read and understand reinforcement bar details from hand sketch.			
Task to be performed by individual			
Requirement for the task:-			
<ol style="list-style-type: none"> 1. Question papers (both theory and practical) and answer sheets. 2. Materials such as rebars (8mm, 10mm, 12mm, 16mm), binding wire, cover blocks (for Beam, column, slab and footing). 			
Infrastructure required:-			
<ol style="list-style-type: none"> 1. Class room (capacity: 30 students). 2. Workshop for practical assessment. 3. Toilet (separate for gents and ladies). 4. Safety department (having PPE, fire extinguishers, first aid kit etc.). 5. Power supply (3-phase and single phase) 			
Sl.No	Practical skill assessment question	Marks	Duration
1	Consider fig.1 and find out the following details:		30 minutes
	a). Identify the RCC structure	5	
	b). Identify the diameter of the main bars and stirrups	5	
	c). Identify the shape of the cross section of the RCC structure	5	
	d). Find out the numbers of the stirrups used in the RCC structure	5	
2	Find the spacing of the stirrups for the RCC structure shown in the fig no 1	8	
3	Identify and collect different size of cover block from the workshop's store. And label them according to the type of RCC structure in which it is use (such as beam/column/slab).	12	
4	Calculate the cutting length of following elements: 	30	
5	Determine the lap length for 8mm, 10mm and 12 mm bars.	10	
	Total marks	80	
	Total Duration		30 minutes

CON/NO215: Use and maintain materials, tools and equipment relevant to reinforcement works.			
Task to be performed by team of at least 4 members.			
Requirement for the task:-			
1. Question papers (both theory and practical) and answer sheets.			
2. Materials such as rebars (8mm, 10mm, 12mm, 16mm), binding wire.			
3. Hand tools and power tools.			
Infrastructure required:-			
1. Class room (capacity: 30 students).			
2. Workshop for practical assessment.			
3. Toilet (separate for gents and ladies).			
4. Safety department (having PPE, fire extinguishers, first aid kit etc.).			
5. Power supply (3-phase and single phase)			
Sl.No:	Practical skill assessment question	Marks	Duration
1	Demonstrate the safe use of following hand tool used in bar bending work. a). Chisel and hammer b). Binding hook c). Bending Lever	40	30 min (0.5 hrs)
	Demonstrate the safe use of following power tools (any one). a). Rebar cutting machine b). Bar bending machine c). Bar binding machine	40	

Total marks	<u>80</u>
Total duration	<u>30 min</u>

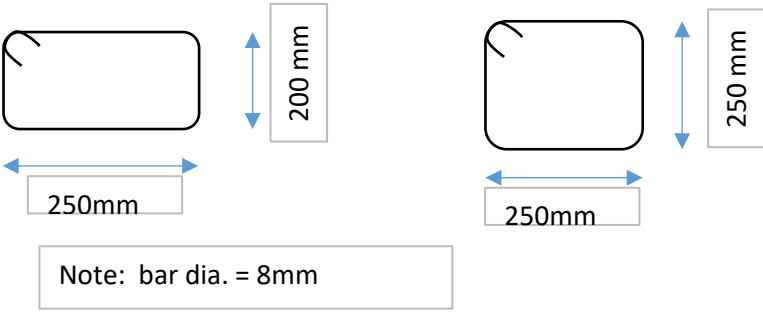
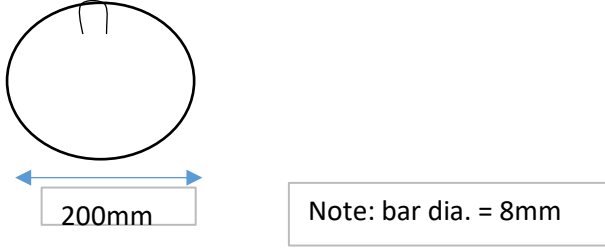
CON/NO216: Perform cutting and manual bending of rebar for simple shape.

Requirement for the task:-

1. Question papers (both theory and practical) and answer sheets.
2. Materials such as rebars (8mm, 10mm, 12mm, 16mm), binding wire.
3. Hand tools and power tools.

Infrastructure required:-

1. Class room (capacity: 30 students).
2. Workshop for practical assessment.
3. Toilet (separate for gents and ladies).
4. Safety department (having PPE, fire extinguishers, first aid kit etc.).
5. Power supply (3-phase and single phase)

Sl.No:	Practical skill assessment question	Marks	Duration
1	Cut and bend following stirrup. (any one) (Individual task)		
		15	60 min (1 hrs)
2	Cut and bend following stirrup. (Individual task)		
		15	
3	Cut and prepare the rebar's material in required quantity as per the fig. no.:1. (Group task, 4 member team)	50	

Total marks 80
Total duration 150 min

CON/NO217 Assist in fabrication, placing and fixing of rebar for pre-fabricated and in-situ RCC structures.

Task to be performed by team of 4 members.

Requirement for the task:-

1. Question papers (both theory and practical) and answer sheets.
2. Materials such as rebars (8mm, 10mm, 12mm, 16mm), binding wire.
3. Hand tools and power tools.

Infrastructure required:-

1. Class room (capacity: 30 students).
2. Workshop for practical assessment.
3. Toilet (separate for gents and ladies).
4. Safety department (having PPE, fire extinguishers, first aid kit etc.).
5. Power supply (3-phase and single phase)

Sl.No:	Practical skill assessment question	Marks	Duration
1	Fabricate, place and fix rebars for the following beam(fig. no.: 1) using suitable types of ties.	80	<u>60 min (1 hrs)</u>

Total marks 80
Total duration 90 min

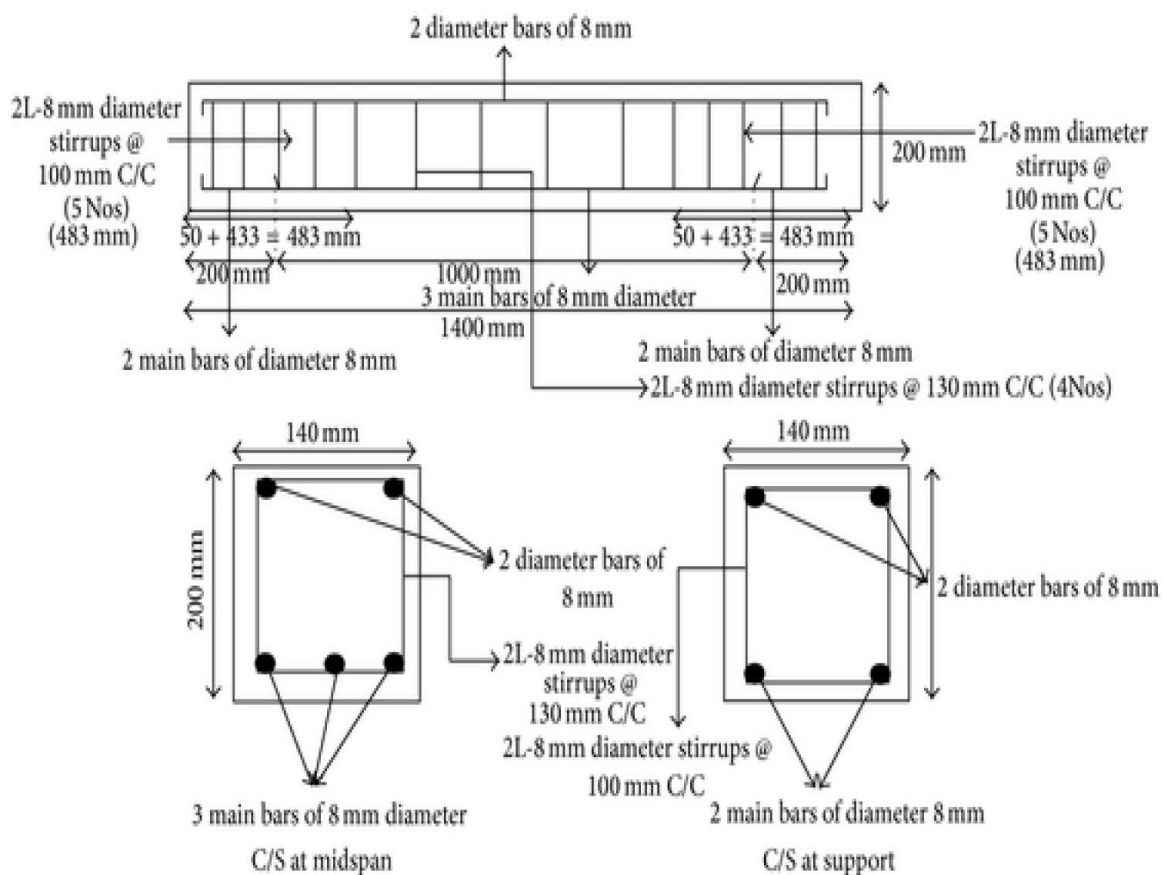


Fig. No.: 1

CON/NO101 Erect and dismantle temporary scaffold of 3.6 meter height.


Task to be performed by team of at least 4 members.

Requirement for the task:-

1. Question papers (both theory and practical) and answer sheets.
2. Materials such as rebars (8mm, 10mm, 12mm, 16mm), binding wire.
3. Hand tools and power tools.

Infrastructure required:-

1. Class room (capacity: 30 students).
2. Workshop for practical assessment.
3. Toilet (separate for gents and ladies).
4. Safety department (having PPE, fire extinguishers, first aid kit etc.).
5. Power supply (3-phase and single phase)

Sl.No:	Practical skill assessment question	Marks	Duration
			60 min (1 hrs)
1	Prepare the ground for the erection of the scaffolding for 3.6 meter height.	10	
2	Make a list and collect all the materials and hand tools required for the scaffolding work from the workshop's storeroom.	10	
3	Wear all the required PPE and establish safe environment for carrying out the scaffolding work.	10	
4	Erect the scaffolding for 3.6 meter height within the tolerance limit.	25	
5	Dismantle the scaffolding as per standard practice.	25	

Total marks 80
Total duration 120 min

CON/N8001 Work effectively in a team to deliver desired results at the workplace

Based on the performance of the task under NOS: N0214, 215, 216, 217, 101, 9001

Note: This should not be given to the candidate.

Sl. No.	Practical skill assessment question	Marks	Duration
1	Observe the candidate's cooperation within the team in terms of willingness to share the task responsibility.	10	Simultaneous to the duration of task performed as per N0214, 215, 216, 217, 101, 9001.
2	Observe how the candidate escalate deviations to the seniors/ assessors while performing the given task.	15	
3	Observe the candidate's approach towards addressing and reporting the problems faced while performing the given task.	15	
4	Check the alertness/attentiveness of trainee for instructions by assessor.	10	
5	Observe how the candidate seeks clarification and resolve the issues raised during performing the task.	15	
6	Observe the individual's coordination with his teammates in completing task within allotted time.	15	

CON/N9001 Work according to personal health, safety and environment protocol at construction site.

Based on the performance of the task under NOS: N0351/0352

Infrastructure required:-

1. Class room (capacity: 30 students).
2. Workshop for practical assessment.
3. Toilet (separate for gents and ladies).
4. Safety department (having PPE, fire extinguishers, first aid kit etc.).
5. Power supply (3-phase and single phase)

Sl. No.	Practical skill assessment question	Marks	Duration
1	How a person identify hazards or risks at the site and report to their supervisor?	10	30 mins (.5 hrs)
2	How a person respond to emergency and evacuation procedures in the case of accidents, fire or mock drills?	8	
3	List out all the PPE's and demonstrate any two (its use, parts, type, colour code etc.) used during the given task.	25	
4	List out the PPE's used for other different activities (brick work/ IPS flooring/ plastering)	5	
5	List out different types of fire extinguishers.	3	
6	Demonstrate the operating procedure for the given Fire Extinguishers.	5	
7	Demonstrate how to handle and operate bar cutting machine/ bar bending machine with safety.	8	
8	Demonstrate how to place a ladder against the wall safely.	4	
9	Observe the candidate whether he/she is following precautionary measures in the disposal of harmful waste/ chemicals.	4	
10	Check for the housekeeping and shifting of surplus materials/ waste to the designated yard.	8	